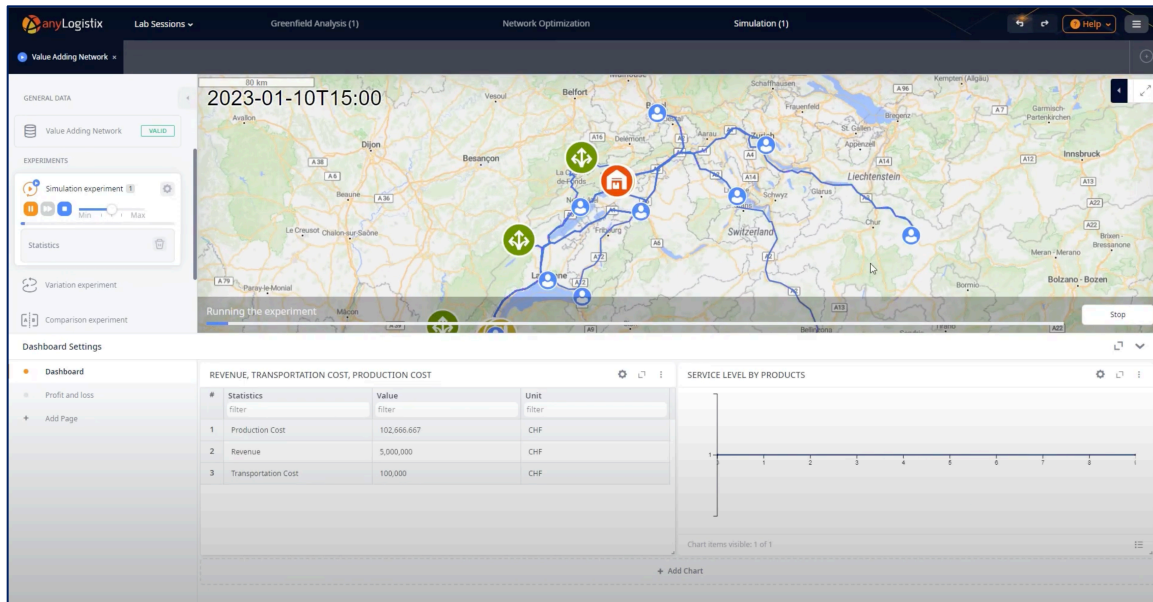




Building a Value-Adding Network in anyLogistix: Video Guide & Learning Objectives



1. Before You Begin

- Watch this step-by-step guided video on YouTube: <https://youtu.be/DozX-2xnWg>
- For the best experience, enable **English subtitles** and adjust the video quality to **HD** in the YouTube settings.
- This video was created using an earlier version of anyLogistix. Some interface elements have been updated in later versions. These changes are minor, and the updated steps should still be intuitive. Key differences include:
 - The **welcome page**, project creation, and scenario import interfaces have been updated.
 - **Model selection** has moved from the top menu to the left-hand corner under the “**All types**” button.
 - The combined “**DCs and Factories**” data table is now split into two separate tables: “**Distribution Centers**” and “**Factories.**”
 - The interface for adding **charts and tables** to simulation results has been revised.



2. Purpose of the Video

This video offers a comprehensive step-by-step guide to developing a value-adding supply chain network in anyLogistix. Using a watch manufacturing network in Switzerland as an example, the video illustrates how to design the network, set parameters, and conduct simulation experiments. This exercise will help you gain insights into monitoring supply chain performance with simulation analytics in anyLogistix.

3. Key Learning Points

By watching this video, you will learn:

- **Network Creation:** How to define supply chain entities (suppliers, factories, warehouses, and customers) and establish relationships between them.
- **Policy & Parameter Configuration:** Establishing essential parameters for supply, production, sourcing, inventory, and transportation.
- **Simulation Setup:** Running experiments to test different supply chain scenarios and analyze network performance.
- **Performance Monitoring:** Using simulation analytics to assess key metrics such as network costs and service levels.

4. Exercise Questions

After watching the video and practicing the case, take some time to reflect on your learnings and answer the following questions. Be prepared to discuss your answers during the next lab session:

- **Network Design:** How do the primary supply chain entities or nodes (e.g., suppliers, factories, warehouses, customers) vary across different industry sectors? Provide examples from industries such as automotive, pharmaceuticals, and retail.
- **Performance of Network:** Along with cost and service level, include a new chart in anyLogistix to track inventory levels within distribution centers. What insights could this offer for enhancing network efficiency?
- **Application:** What are the main circumstances under which companies choose to redesign their supply chain networks?